



VARLEY



H Varley Limited
Materials Handling Range
Catalogue MH02



VARLEY

H Varley Limited



Materials Handling Range

Specification and product selection

All catalogue load ratings are in kilogrammes unless otherwise stated.

All catalogue dimensions are in millimetres unless otherwise stated.

Load ratings given are based on intermittent use in normal applications. Special conditions may apply under any of the following applications or hazards:

- Uneven floor surface
- Ramps, cracks, gullies, door guide rails

It may be appropriate to select a product with a load capacity much greater than would appear necessary in a given set of circumstances, please ask our technical sales team for assistance in product selection.

Specifications (by dimension, description, illustration or otherwise) may be approximate and liable to change without notice, especially with regard to developments and improvements.

Listing of goods does not necessarily imply that they are ex-stock, nor do we accept any obligation to supply them.

All recommendations are given to the best of our knowledge and ability. No liability is accepted for their application.

CONTENTS

Introduction 2

TRUCKS AND TROLLEYS

STS	Sack trucks: Standard	3
STF	Sack trucks: Folding	4
STC	Sack trucks: Stair climbing	5
TTS	Turntable trucks	6-8
BTS	Table trolley	8
LTS	Platform trucks	9
HTS	Shelf trolleys	10
DDS	Dollies	11
DIS	DIY trucks, trolleys	12-13
CAS	Cash and carry trucks, trolleys	14-15
CAS	Wire baskets	15
GAR	Garment rails	16
	General handling / access	17

CONVEYING

R PL	Rollers: Plastic, light duty	18-19
R ST	Rollers: Steel, medium duty	20-21
R PT	Rollers: Steel, heavy duty	22-23
R SS	Rollers: Stainless, medium duty	24
GR	Grooved rollers,	25
RD	Drive bands	25
TRS	Transfer spools	25
SUS	Speed up spools	25
LC	Channel: Light duty	26
HC	Channel: Heavy duty	26
SC	Channel: Fixed wheel	27
CTS	Conveyor track, track stands	28
TS	Track stands	29
	Complete conveying systems	30

ADJUSTABLE FEET, TUBE END FITTINGS

BA	Aluminium feet	31
AF	Adjustable feet and sockets	32-33
EF	Tube end fittings	33

BALL TRANSFER UNITS

V	Types A-J	34-37
---	-----------	-------

COMPONENTS

AX	Axle sets	38
STARLOCK	Fixing washers	38

TRUCK LOCKS

TLCM	Side plate	39
4040	Top plate	40
TLCH	Top plate	41

TURNTABLES

KDL, HE, SO, L, N	42-47
-------------------	-------

OTHER PAGES

Index	48
-------	----





Preferred Range



With the demands of an ever changing marketplace linked to an over-populated and complex product range, we at Varleys have refined the core range of products on offer

and called it the Preferred Range.

The Preferred Range we offer covers the majority of basic castor, wheel and materials handling requirements in a simple and easy to understand product catalogue.



In refining the range of products from our vast stock offering, we have taken into consideration the main demands and requirements which you, our customer, places upon us. Key features of the Preferred Range include:

- Top quality branded products (ISO 9001 compliant)



- A concise range of standard application products from light duty pressed steel to heavy duty fabricated castors and wheels for truck and trolley use.
- Off the shelf availability
- Price Competitive



Simply contact your local branch from the list at the bottom of the page to order your preferred range catalogue.

In addition to the Preferred Range we also provide specialist niche market catalogues and other popular ranges of castors you may be interested in. Please see pages 17, 30 for illustrations of products from other Varley ranges or contact our sales team for more information.



VARLEY

H Varley Limited

H Varley Limited has specialised in supplying the UK castor market since 1938, offering our customers the stability and strength they require.



PRESSED STEEL CASTORS AND WHEELS

Our success has been achieved by responding to customers' needs by offering:

Service and Support

Preferred Range stock is held at our local branches. At each location, technical field sales representatives are supported by knowledgeable and experienced sales office personnel to ensure your requirements are met accurately and rapidly with a standard next day delivery or same day trade counter collection.



FABRICATED STEEL CASTORS AND WHEELS

Quality and Brands

H Varley takes pride in offering only the best quality branded products from the world's leading castor and wheel suppliers to make certain our customers are consistently supplied with dependable, quality products to BS EN ISO 9001:2000.



SPECIAL APPLICATION CASTORS

Specification

We are continually exploring and developing our product ranges. By working closely with our suppliers and analysing market trends and requirements we endeavour to keep our customers informed and at the forefront of new technology and design with new product options available into both existing and new market places.



SPECIAL APPLICATION WHEELS

Market Prices



MISCELLANEOUS PRODUCTS

Price requirements are constantly monitored and reviewed with our suppliers to ensure our customers are consistently supplied at competitive market prices



Construction: Tubular steel
Finish: Blue powder coated
Style: Straight back
Handle style: Double grip
Toe plate: Solid
Wheels: Rubber tyre, polypropylene centre

wheel diameter	overall height	overall width	overall depth	toe plate width	toe plate depth	load capacity	weight	reference
200	1060	470	400	420	200	100	12.56	STS B3



Construction: Tubular steel
Finish: Blue powder coated
Style: Straight back, lattice
Handle style: Double grip
Toe plate: Lattice
Wheels: Rubber tyre, pressed steel centre

wheel diameter	overall height	overall width	overall depth	toe plate width	toe plate depth	load capacity	weight	reference
200	1160	450	490	380	220	150	15.46	STS D3



Construction: Tubular steel
Finish: Blue powder coated
Style: Straight back, lattice
Handle style: Double grip
Toe plate: Lattice
Wheels: Rubber tyre, pressed steel centre

wheel diameter	overall height	overall width	overall depth	toe plate width	toe plate depth	load capacity	weight	reference
200	1220	480	470	315	230	150	18.74	STS F3



NOTE: All dimensions are in mm and all loadings in kg unless otherwise stated

SACK TRUCKS

STF
FOLDING

- Versatile sack trucks with extended folding toe plate
- Can be customised on request

VARLEY



Construction: Tubular steel
Finish: Blue powder coated
Style: Straight back
Handle style: Double grip
Toe plate: Extended, folding
Wheels: Rubber tyre, polypropylene centre

wheel diameter	overall height	overall width	overall depth unfolded	overall depth folded	toe plate width	toe plate depth	load capacity	weight	reference
200	1180	540	880	220	380	460	100	11 98	STF H3



Construction: Tubular steel
Finish: Blue powder coated
Style: Straight back
Handle style: Loop
Toe plate: Extended, folding
Wheels: Rubber tyre, pressed steel centre

wheel diameter	overall height	overall width	overall depth unfolded	overall depth folded	toe plate width	toe plate depth	load capacity	weight	reference
200	950	460	700	230	460	300	250	11 64	STF J3

NOTE: All dimensions are in mm and all loadings in kg unless otherwise stated



- Stair climbing sack truck with extended folding toe plate
- Can be customised on request



Construction: Tubular steel
Finish: Blue powder coated
Style: Straight back
Handle style: Loop
Toe plate: Extended, folding
Wheels: Rubber tyre, polypropylene centre

wheel diameter	overall height	overall width	overall depth unfolded	overall depth folded	toe plate width	toe plate depth	load capacity	weight	reference
140	1110	460	640	350	260	320	120	12.18	STC L3

NOTE: All dimensions are in mm and all loadings in kg unless otherwise stated

TURNS TABLE TRUCKS TTS

○ Can be customised on request

VARLEY



Construction: Steel, timber bed
Finish: Blue powder coated
Turntable type: Anti-friction
Handle style: 'Tee'

wheel diameter	overall height	overall width	overall length	bed width	bed length	load capacity	weight	fitted with solid tyred wheels	fitted with pneumatic tyred wheels	fitted with 'puncture proof' wheels
250	250	250	250	250	250	250	60	TTS B3 S		



Construction: Steel, timber bed
Finish: Blue powder coated
Turntable type: Anti-friction
Handle style: Loop

wheel diameter	overall height	overall width	overall length	bed width	bed length	load capacity	weight	fitted with solid tyred wheels	fitted with pneumatic tyred wheels	fitted with 'puncture proof' wheels
350	485	760	1725	760	1525	1000	65	TTS D3 S		
400	500	760	1725	760	1525	750	60		TTS D3 P	
400	500	760	1725	760	1525	900	60			TTS D3 R

NOTE: All dimensions are in mm and all loadings in kg unless otherwise stated



- Stair climbing sack truck with extended folding toe plate
- Can be customised on request

Construction: Steel, timber bed
Finish: Blue powder coated
Turntable type: Anti-friction
Handle style: Loop



wheel diameter	overall height	overall width	overall length	bed width	bed length	load capacity	weight	fitted with solid tyred wheels	fitted with pneumatic tyred wheels	fitted with 'puncture proof' wheels
400	485	1000	2100	1000	2000	1000	75	TTS F3 S		
400	485	1000	2100	1000	2000	750	70		TTS F3 P	
400	485	1000	2100	1000	2000	900	70			TTS F3 R

Construction: Steel, timber bed
Finish: Blue powder coated
Turntable type: Anti-friction
Handle style: Loop



Height of sides: 200mm

Note: Both sides drop down, ends fixed



wheel diameter	overall height	overall width	overall length	bed width	bed length	load capacity	weight	fitted with solid tyred wheels	fitted with pneumatic tyred wheels	fitted with 'puncture proof' wheels
370	680	780	1750	690	1460	900	88			TTS H3 R

NOTE: All dimensions are in mm and all loadings in kg unless otherwise stated

TURNTABLE TRUCKS

TTS

○ Can be customised on request

VARLEY



Construction: Steel, timber bed
Finish: Blue powder coated
Turntable type: Precision ball bearing
Handle style: 'Tee'

wheel diameter	overall height	overall width	overall length	bed width	bed length	load capacity	weight	fitted with solid tyred wheels	fitted with pneumatic tyred wheels	fitted with 'puncture proof' wheels
300	440	800	1600	800	1500	2000	77	TTS J3 S		

TABLE TROLLEY

BTS

○ General purpose table trolley with lower shelf
 ○ Can be customised on request

VARLEY



Construction: Tubular steel, timber shelves
Finish: Blue powder coated
Wheel type: Rubber tyre, polypropylene centre

wheel diameter	overall height	overall width	overall length	load capacity	weight	fitted with 2 fixed + 2 swivel brake castors
125	909	690	1290	300	42	BTS B3 FB

NOTE: All dimensions are in mm and all loadings in kg unless otherwise stated



Construction: Tubular steel, timber platform
Finish: Blue powder coated
Wheel type: Rubber tyre, polypropylene centre



wheel diameter	overall height	overall width	overall length	load capacity	weight	fitted with 2 fixed + 2 swivel castors	fitted with 2 fixed + 2 swivel brake castors
200	1000	700	1200	300	32	LTS B3 FS	LTS B3 FB

Construction: Tubular steel, timber platform & ends
Finish: Blue powder coated
Wheel type: Rubber tyre, polypropylene centre



wheel diameter	overall height	overall width	overall length	load capacity	weight	fitted with 2 fixed + 2 swivel castors	fitted with 2 fixed + 2 swivel brake castors
200	1000	700	1200	300	35	LTS D3 FS	LTS D3 FB

Construction: Tubular steel, timber platform
Finish: Blue powder coated
Wheel type: Rubber tyre, polypropylene centre



wheel diameter	overall height	overall width	overall length	load capacity	weight	fitted with 2 fixed + 2 swivel castors	fitted with 2 fixed + 2 swivel brake castors
200	1000	700	1200	300	43	LTS F3 FS	LTS F3 FB

NOTE: All dimensions are in mm and all loadings in kg unless otherwise stated

SHELF TROLLEYS

HTS

- General purpose trolleys with variety of shelf and side configurations
- Can be customised on request

VARLEY



Construction: Tubular steel, 20mm plywood shelves
Finish: Blue powder coated
Wheel type: Rubber tyre, polypropylene centre

wheel diameter	overall height	overall width	overall length	load capacity	weight	fitted with 2 fixed + 2 swivel castors	fitted with 2 fixed + 2 swivel brake castors
125	1780	700	1200	300	72	HTS B3 FS	HTS B3 FB



Construction: Tubular steel, welded mesh sides & back, 20mm plywood shelves
Finish: Blue powder coated
Wheel type: Rubber tyre, polypropylene centre

Note: Trolley in photograph is customised with hard wearing-polyurethane tyred wheels

wheel diameter	overall height	overall width	overall length	load capacity	weight	fitted with 2 fixed + 2 swivel castors	fitted with 2 fixed + 2 swivel brake castors
125	1000	700	1200	300	73	HTS D3 FS	HTS D3 FB

NOTE: All dimensions are in mm and all loadings in kg unless otherwise stated



Construction: Steel
Finish: Blue powder coated
Wheel type: Nylon

Note: Bins not included, please ask for details



wheel diameter	overall height	overall width	overall length	load capacity	weight	fitted with 4 swivel castors
80	100	410	610	200	5.6	DDS B3
80	100	610	810	200	7.0	DDS B5

Construction: 18mm ply, rubber topped platform
Finish: Self colour
Wheel type: Nylon



wheel diameter	overall height	overall width	overall length	load capacity	weight	fitted with 4 swivel castors
80	100	500	500	300	6.82	DDS D3

Construction: Plastic
Finish: Red
Wheel type: Polypropylene



wheel diameter	overall height	overall width	overall length	load capacity	weight	fitted with 4 swivel castors
80	125	400	600	250	3.74	DDS F3

NOTE: All dimensions are in mm and all loadings in kg unless otherwise stated

DIY TRUCKS AND TROLLEYS

DIS

- Specifically designed for DIY applications
- Can be customised on request

VARLEY



Construction: Tubular steel, welded mesh basket
Finish: Blue powder coated
Wheel type: Rubber tyre, polypropylene centre

Note: Both sides removable, ends fixed

wheel diameter	overall height	overall width	overall length	basket height	basket width	basket length	load capacity	weight	fitted with 2 fixed + 2 swivel castors	fitted with 2 fixed + 2 swivel brake castors
200	1060	700	1225	300	650	1160	300	38	DIS B3 FS	DIS B3 FB



Construction: Tubular steel, timber platform & ends
Finish: Blue powder coated
Wheel type: Rubber tyre, polypropylene centre

wheel diameter	overall height	overall width	overall length	load capacity	weight	fitted with 2 fixed + 2 swivel castors	fitted with 2 fixed + 2 swivel brake castors
200	1000	700	1200	300	43	DIS D3 FS	DIS D3 FB



Construction: Tubular steel, timber platform
Finish: Blue powder coated
Wheel type: Rubber tyre, polypropylene centre

wheel diameter	overall height	overall width	overall length	load capacity	weight	fitted with 3 support tubes 2 swivel + 2 swivel brake castors	fitted with 6 support tubes 2 swivel + 2 swivel brake castors
200	1230	700	1270	300	40	DIS F3 FB	
200	1230	700	1270	300	40		DIS F6 FB

NOTE: All dimensions are in mm and all loadings in kg unless otherwise stated



Construction: Steel
Finish: Blue powder coated
Load wheel type: Pneumatic tyre, polypropylene centre
Guide wheel type: Rubber tyre



load wheel diameter	guide wheel diameter	overall height	overall width	overall length	bed width	overall length	load capacity	weight	
250	100	1330	600	1250	200	600	250	15.62	fitted with 2 wheels + 2 castors DIS J3 P

Construction: Tubular steel
Finish: Blue powder coated



wheel diameter	overall height	overall width	overall length	load capacity	weight	fitted with rubber tyred, pressed steel centre wheels	fitted with pneumatic tyred, polypropylene centre wheels	fitted with rubber tyred, cast iron centre wheels
200	540	400	1110	250	18	DIS L3 P	DIS L3 S	DIS L3 C
250	540	400	1110	200	18			
300	540	400	1110	500	30			

NOTE: All dimensions are in mm and all loadings in kg unless otherwise stated

- Specifically designed for cash and carry applications
- Can be customised on request



Construction: Tubular steel, welded mesh
Finish: Bright zinc plated
Wheel type: Rubber tyre, polypropylene centre

wheel diameter	overall height	overall width	overall length	bed width	bed length	load capacity	weight	fitting
200	1070	670	1450	600	1200	500	39	fitting with 2 fixed + 2 swivel castors
								CAS B3



Construction: Tubular steel, timber platform, welded mesh
Finish: Blue powder coated
Wheel type: Rubber tyre, polypropylene centre

wheel diameter	overall height	overall width	overall length	bed width	bed length	load capacity	weight	fitting
200	1070	670	1450	600	1200	500	39.32	fitting with 2 fixed + 2 swivel castors
								CAS D3



Construction: Tubular steel, timber platform
Finish: Blue powder coated
Fixed wheel type: Polyurethane tyre, nylon centre
Castor wheel type: Rubber tyre, polypropylene centre

fixed wheel diameter	castor wheel diameter	overall height	overall width	overall length	bed width	bed length	load capacity	weight	fitting
200	125	1285	380	1570	380	1500	500	35	fitting with 2 fixed wheels + 4 swivel castors
								CAS F3	

NOTE: All dimensions are in mm and all loadings in kg unless otherwise stated



- Specifically designed for cash and carry applications
- Can be customised on request

Construction: Tubular steel, welded mesh
Finish: Bright zinc plated
Wheel type: Nylon



wheel diameter	overall height	overall width	overall length	load capacity	weight	fitted with 2 fixed, 2 swivel castors
125	1690	735	850	500	35	CAS H3

Construction: Welded mesh, coated handles
Finish: Bright zinc plated, blue handles (other colours available)



capacity	pack of 10 reference
19 litre	CAS 19
23 litre	CAS 23

NOTE: All dimensions are in mm and all loadings in kg unless otherwise stated

GARMENT RAILS GAR

- Ideal for storage, transport and display
- Can be customised on request

VARLEY



Construction: Tubular steel
Finish: Antique silver powder coated
Wheel type: Grey rubber tyre, polypropylene centre

wheel diameter	overall height	overall width	overall length	load capacity	weight	fitted with 2 swivel + 2 swivel brake castors
100	1870	540	1000	240	20	GAR B3



Construction: Tubular steel
Finish: Antique silver powder coated
Wheel type: Grey rubber tyre, polypropylene centre

wheel diameter	overall height	overall width	overall length	load capacity	weight	fitted with 4 swivel castors
100	1820	510	900	100	15	GAR D3
100	1820	510	1380	100	18	GAR D5
100	1820	510	1840	100	20	GAR D7



Construction: Tubular steel
Finish: Antique silver powder coated
Wheel type: Grey rubber tyre, polypropylene centre

wheel diameter	overall height	overall width	overall length	load capacity	weight	fitted with 4 swivel castors
100	1425	400	600	100	12	GAR F3

NOTE: All dimensions are in mm and all loadings in kg unless otherwise stated

A further selection of materials handling and access products...



Clockwise from top left:

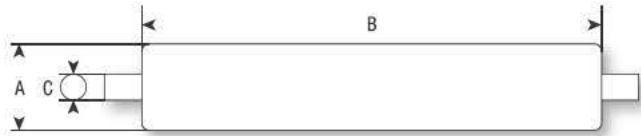
Order picking trolley with steps; EasyGlide steps; access platform; double gas bottle truck; mobile steps; sack truck with load protection; mobile access platform



PLASTIC ROLLERS
R PL TR
LIGHT DUTY

- Roller material: Plastic
- Spindle material: Steel
- Spindle type: Round, spring loaded

VARLEY

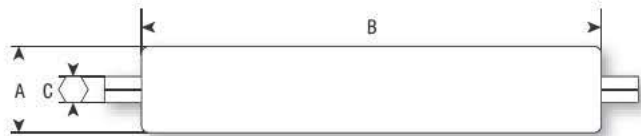


roller diameter A	roller width B	wall guage	inside frame width	load capacity	spindle diameter C	reference
20	100	1.5	105	2.5	5	R20 PL 100 TR05
	200	1.5	205	2.5	5	R20 PL 200 TR05
	300	1.5	305	2.5	5	R20 PL 300 TR05
	400	1.5	405	0.5	5	R20 PL 400 TR05
40	200	2.5	210	7	8	R40 PL 200 TR08
	200	2.5	210	7	10	R40 PL 200 TR10
	300	2.5	310	7	8	R40 PL 300 TR08
	300	2.5	310	7	10	R40 PL 300 TR10
	400	2.5	410	7	8	R40 PL 400 TR08
	400	2.5	410	7	10	R40 PL 400 TR10
	500	2.5	510	7	8	R40 PL 500 TR08
	500	2.5	510	7	10	R40 PL 500 TR10
	600	2.5	610	1	8	R40 PL 600 TR08
	600	2.5	610	1	10	R40 PL 600 TR10
50	300	3.0	310	10	8	R50 PL 300 TR08
	300	3.0	310	10	10	R50 PL 300 TR10
	400	3.0	410	10	8	R50 PL 400 TR08
	400	3.0	410	10	10	R50 PL 400 TR10
	500	3.0	510	10	8	R50 PL 500 TR08
	500	3.0	510	10	10	R50 PL 500 TR10
	600	3.0	610	10	8	R50 PL 600 TR08
	600	3.0	610	10	10	R50 PL 600 TR10
	700	3.0	710	5	8	R50 PL 700 TR08
	700	3.0	710	5	10	R50 PL 700 TR10

PLASTIC ROLLERS
R PL TH
LIGHT DUTY

- Roller material: Plastic
- Spindle material: Steel
- Spindle type: Hexagonal, spring loaded

VARLEY



roller diameter A	roller width B	wall guage	inside frame width	load capacity	spindle A/F C	reference
40	200	2.0	210	99	11	R40 PL 200 TH11
	300	2.0	310	99	11	R40 PL 300 TH11
	400	2.0	410	99	11	R40 PL 400 TH11
	500	2.0	510	99	11	R40 PL 500 TH11
	600	2.0	610	99	11	R40 PL 600 TH11
50	300	3.0	310	99	11	R50 PL 300 TH11
	400	3.0	410	99	11	R50 PL 400 TH11
	500	3.0	510	99	11	R50 PL 500 TH11
	600	3.0	610	99	11	R50 PL 600 TH11
	700	3.0	710	99	11	R50 PL 700 TH11

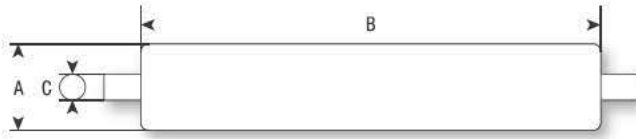
NOTE: All dimensions are in mm and all loadings in kg unless otherwise stated



VARLEY

- Roller material: Plastic
- Spindle material: Stainless steel
- Spindle type: Round, spring loaded

PLASTIC ROLLERS
R PL SR
LIGHT DUTY



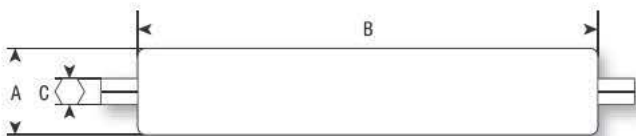
roller diameter A	roller width B	wall guage	inside frame width	load capacity	spindle diameter C	reference
20	100	1.5	105	2.5	5	R20 PL 100 SR05
	200	1.5	205	2.5	5	R20 PL 200 SR05
	300	1.5	305	2.5	5	R20 PL 300 SR05
	400	1.5	405	0.5	5	R20 PL 400 SR05
40	200	2.5	210	7	8	R40 PL 200 SR08
	200	2.5	210	7	10	R40 PL 200 SR10
	300	2.5	310	7	8	R40 PL 300 SR08
	300	2.5	310	7	10	R40 PL 300 SR10
	400	2.5	410	7	8	R40 PL 400 SR08
	400	2.5	410	7	10	R40 PL 400 SR10
	500	2.5	510	7	8	R40 PL 500 SR08
	500	2.5	510	7	10	R40 PL 500 SR10
	600	2.5	610	1	8	R40 PL 600 SR08
	600	2.5	610	1	10	R40 PL 600 SR10
50	300	3.0	310	10	8	R50 PL 300 SR08
	300	3.0	310	10	10	R50 PL 300 SR10
	400	3.0	410	10	8	R50 PL 400 SR08
	400	3.0	410	10	10	R50 PL 400 SR10
	500	3.0	510	10	8	R50 PL 500 SR08
	500	3.0	510	10	10	R50 PL 500 SR10
	600	3.0	610	10	8	R50 PL 600 SR08
	600	3.0	610	10	10	R50 PL 600 SR10
	700	3.0	710	5	8	R50 PL 700 SR08
	700	3.0	710	5	10	R50 PL 700 SR10



VARLEY

- Roller material: Plastic
- Spindle material: Stainless steel
- Spindle type: Hexagonal, spring loaded

PLASTIC ROLLERS
R PL SH
LIGHT DUTY



roller diameter A	roller width B	wall guage	inside frame width	load capacity	spindle A/F C	reference
40	200	2.0	210	99	11	R40 PL 200 SH11
	300	2.0	310	99	11	R40 PL 300 SH11
	400	2.0	410	99	11	R40 PL 400 SH11
	500	2.0	510	99	11	R40 PL 500 SH11
	600	2.0	610	99	11	R40 PL 600 SH11
50	300	3.0	310	99	11	R50 PL 300 SH11
	400	3.0	410	99	11	R50 PL 400 SH11
	500	3.0	510	99	11	R50 PL 500 SH11
	600	3.0	610	99	11	R50 PL 600 SH11
	700	3.0	710	99	11	R50 PL 700 SH11

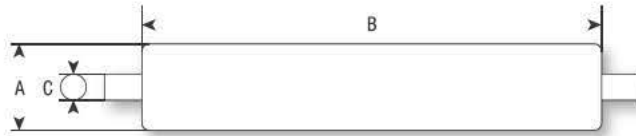
NOTE: All dimensions are in mm and all loadings in kg unless otherwise stated

MILD STEEL ROLLERS

R ST TR
MEDIUM DUTY

- Roller material: Mild steel
- Spindle material: Steel
- Spindle type: Round, spring loaded

VARLEY



roller diameter A	roller width B	wall guage	inside frame width	load capacity	spindle diameter C	reference
25	100	1.2	105	10	6	R25 ST 100 TR06
	150	1.2	155	10	6	R25 ST 150 TR06
	200	1.2	205	10	6	R25 ST 200 TR06
	250	1.2	255	10	6	R25 ST 250 TR06
	300	1.2	305	10	6	R25 ST 300 TR06
	350	1.2	355	10	6	R25 ST 350 TR06
	400	1.2	405	10	6	R25 ST 400 TR06
	450	1.2	455	10	6	R25 ST 450 TR06
	500	1.2	505	10	6	R25 ST 500 TR06
	40	200	1.5	210	25	8
200		1.5	210	25	10	R40 ST 200 TR10
250		1.5	260	25	8	R40 ST 250 TR08
250		1.5	260	25	10	R40 ST 250 TR10
300		1.5	310	25	8	R40 ST 300 TR08
300		1.5	310	25	10	R40 ST 300 TR10
350		1.5	360	25	8	R40 ST 350 TR08
350		1.5	360	25	10	R40 ST 350 TR10
400		1.5	410	25	8	R40 ST 400 TR08
400		1.5	410	25	10	R40 ST 400 TR10
450		1.5	460	25	8	R40 ST 450 TR08
450		1.5	460	25	10	R40 ST 450 TR10
500		1.5	510	25	8	R40 ST 500 TR08
500		1.5	510	25	10	R40 ST 500 TR10
550		1.5	560	25	8	R40 ST 550 TR08
550		1.5	560	25	10	R40 ST 550 TR10
600		1.5	610	25	8	R40 ST 600 TR08
600		1.5	610	25	10	R40 ST 600 TR10
50	300	1.5	310	120	10	R50 ST 300 TR10
	300	1.5	310	120	12	R50 ST 300 TR12
	350	1.5	360	120	10	R50 ST 350 TR10
	350	1.5	360	120	12	R50 ST 350 TR12
	400	1.5	410	120	10	R50 ST 400 TR10
	400	1.5	410	120	12	R50 ST 400 TR12
	450	1.5	460	120	10	R50 ST 450 TR10
	450	1.5	460	120	12	R50 ST 450 TR12
	500	1.5	510	120	10	R50 ST 500 TR10
	500	1.5	510	120	12	R50 ST 500 TR12
	550	1.5	560	120	10	R50 ST 550 TR10
	550	1.5	560	120	12	R50 ST 550 TR12
	600	1.5	610	100	10	R50 ST 600 TR10
	600	1.5	610	100	12	R50 ST 600 TR12
650	1.5	660	80	10	R50 ST 650 TR10	
650	1.5	660	80	12	R50 ST 650 TR12	
700	1.5	710	70	10	R50 ST 700 TR10	
700	1.5	710	70	12	R50 ST 700 TR12	
60	500	2.0	510	120	10	R60 ST 500 TR10
	500	2.0	510	120	12	R60 ST 500 TR12
	550	2.0	560	120	10	R60 ST 550 TR10
	550	2.0	560	120	12	R60 ST 550 TR12
	600	2.0	610	120	10	R60 ST 600 TR10
	600	2.0	610	120	12	R60 ST 600 TR12
	650	2.0	660	120	10	R60 ST 650 TR10
	650	2.0	660	120	12	R60 ST 650 TR12
	700	2.0	710	120	10	R60 ST 700 TR10
	700	2.0	710	120	12	R60 ST 700 TR12
	750	2.0	760	120	10	R60 ST 750 TR10
	750	2.0	760	120	12	R60 ST 750 TR12
	800	2.0	810	120	10	R60 ST 800 TR10
	800	2.0	810	120	12	R60 ST 800 TR12
	850	2.0	860	120	10	R60 ST 850 TR10
	850	2.0	860	120	12	R60 ST 850 TR12
	900	2.0	910	100	10	R60 ST 900 TR10
	900	2.0	910	100	12	R60 ST 900 TR12
	950	2.0	960	90	10	R60 ST 950 TR10
	950	2.0	960	90	12	R60 ST 950 TR12
1000	2.0	1010	80	10	R60 ST 1000 TR10	
1000	2.0	1010	80	12	R60 ST 1000 TR12	

NOTE: All dimensions are in mm and all loadings in kg unless otherwise stated



VARLEY

- Roller material: Mild steel
- Spindle material: Steel
- Spindle type: Hexagonal, spring loaded

MILD STEEL ROLLERS
R ST TH
MEDIUM DUTY



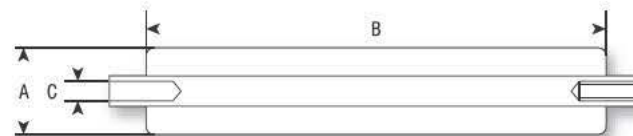
roller diameter A	roller width B	wall guage	inside frame width	load capacity	spindle A/F C	reference
50	300	1.5	310	120	11	R50 ST 300 TH11
	350	1.5	360	120	11	R50 ST 350 TH11
	400	1.5	410	120	11	R50 ST 400 TH11
	450	1.5	460	120	11	R50 ST 450 TH11
	500	1.5	510	120	11	R50 ST 500 TH11
	550	1.5	560	120	11	R50 ST 550 TH11
	600	1.5	610	120	11	R50 ST 600 TH11
	650	1.5	660	120	11	R50 ST 650 TH11
	700	1.5	710	120	11	R50 ST 700 TH11
	750	1.5	760	120	11	R50 ST 750 TH11
	800	1.5	810	120	11	R50 ST 800 TH11
	60	300	2.0	310	120	11
350		2.0	360	120	11	R60 ST 350 TH11
400		2.0	410	120	11	R60 ST 400 TH11
450		2.0	460	120	11	R60 ST 450 TH11
500		2.0	510	120	11	R60 ST 500 TH11
550		2.0	560	120	11	R60 ST 550 TH11
600		2.0	610	120	11	R60 ST 600 TH11
650		2.0	660	120	11	R60 ST 650 TH11
700		2.0	710	120	11	R60 ST 700 TH11
750		2.0	760	120	11	R60 ST 750 TH11
800		2.0	810	120	11	R60 ST 800 TH11
850		2.0	860	120	11	R60 ST 850 TH11
900		2.0	910	100	11	R60 ST 900 TH11
950		2.0	960	90	11	R60 ST 950 TH11
1000	2.0	1010	80	11	R60 ST 1000 TH11	



VARLEY

- Roller material: Mild steel
- Spindle material: Steel
- Spindle type: Round, female thread

MILD STEEL ROLLERS
R ST TF
MEDIUM DUTY



roller diameter A	roller width B	wall guage	inside frame width	load capacity	tapped hole C	reference
50	300	1.5	310	120	M8	R50 ST 300 TFM8
	350	1.5	360	120	M8	R50 ST 350 TFM8
	400	1.5	410	120	M8	R50 ST 400 TFM8
	450	1.5	460	120	M8	R50 ST 450 TFM8
	500	1.5	510	120	M8	R50 ST 500 TFM8
	550	1.5	560	120	M8	R50 ST 550 TFM8
60	600	2.0	610	120	M8	R60 ST 600 TFM8
	650	2.0	660	120	M8	R60 ST 650 TFM8
	700	2.0	710	120	M8	R60 ST 700 TFM8
	750	2.0	760	120	M8	R60 ST 750 TFM8
	800	2.0	810	120	M8	R60 ST 800 TFM8
	850	2.0	860	120	M8	R60 ST 850 TFM8
	900	2.0	910	100	M8	R60 ST 900 TFM8
	950	2.0	960	90	M8	R60 ST 950 TFM8
	1000	2.0	1010	80	M8	R60 ST 1000 TFM8

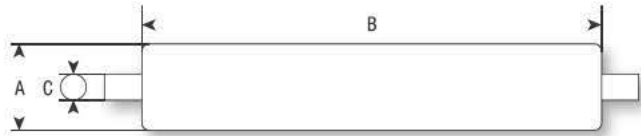
NOTE: All dimensions are in mm and all loadings in kg unless otherwise stated

MILD STEEL ROLLERS

R PT TR
HEAVY DUTY

- Roller material: Mild steel
- Spindle material: Steel
- Spindle type: Round, spring loaded

VARLEY



roller diameter A	roller width B	wall guage	inside frame width	load capacity	spindle diameter C	reference
63	300	3.0	310	320	1/2"	R63 PT 300 TR1/2
	300	3.0	310	320	5/8"	R63 PT 300 TR5/8
	300	3.0	310	320	3/4"	R63 PT 300 TR3/4
	350	3.0	360	320	1/2"	R63 PT 350 TR1/2
	350	3.0	360	320	5/8"	R63 PT 350 TR5/8
	350	3.0	360	320	3/4"	R63 PT 350 TR3/4
	400	3.0	410	320	1/2"	R63 PT 400 TR1/2
	400	3.0	410	320	5/8"	R63 PT 400 TR5/8
	400	3.0	410	320	3/4"	R63 PT 400 TR3/4
	450	3.0	460	320	1/2"	R63 PT 450 TR1/2
	450	3.0	460	320	5/8"	R63 PT 450 TR5/8
	450	3.0	460	320	3/4"	R63 PT 450 TR3/4
	500	3.0	510	320	1/2"	R63 PT 500 TR1/2
	500	3.0	510	320	5/8"	R63 PT 500 TR5/8
	500	3.0	510	320	3/4"	R63 PT 500 TR3/4
	550	3.0	560	320	1/2"	R63 PT 550 TR1/2
	550	3.0	560	320	5/8"	R63 PT 550 TR5/8
	550	3.0	560	320	3/4"	R63 PT 550 TR3/4
	600	3.0	610	320	1/2"	R63 PT 600 TR1/2
	600	3.0	610	320	5/8"	R63 PT 600 TR5/8
	600	3.0	610	320	3/4"	R63 PT 600 TR3/4
	650	3.0	660	200	1/2"	R63 PT 650 TR1/2
	650	3.0	660	200	5/8"	R63 PT 650 TR5/8
	650	3.0	660	200	3/4"	R63 PT 650 TR3/4
	700	3.0	710	200	1/2"	R63 PT 700 TR1/2
	700	3.0	710	200	5/8"	R63 PT 700 TR5/8
	700	3.0	710	200	3/4"	R63 PT 700 TR3/4
	750	3.0	760	200	1/2"	R63 PT 750 TR1/2
	750	3.0	760	200	5/8"	R63 PT 750 TR5/8
	750	3.0	760	200	3/4"	R63 PT 750 TR3/4
	800	3.0	810	20	1/2"	R63 PT 800 TR1/2
	800	3.0	810	20	5/8"	R63 PT 800 TR5/8
	800	3.0	810	20	3/4"	R63 PT 800 TR3/4
	850	3.0	860	20	1/2"	R63 PT 850 TR1/2
	850	3.0	860	20	5/8"	R63 PT 850 TR5/8
	850	3.0	860	20	3/4"	R63 PT 850 TR3/4
	900	3.0	910	120	1/2"	R63 PT 900 TR1/2
	900	3.0	910	120	5/8"	R63 PT 900 TR5/8
	900	3.0	910	120	3/4"	R63 PT 900 TR3/4
	950	3.0	960	120	1/2"	R63 PT 950 TR1/2
	950	3.0	960	120	5/8"	R63 PT 950 TR5/8
	950	3.0	960	120	3/4"	R63 PT 950 TR3/4
	1000	3.0	1010	80	1/2"	R63 PT 1000 TR1/2
	1000	3.0	1010	80	5/8"	R63 PT 1000 TR5/8
	1000	3.0	1010	80	3/4"	R63 PT 1000 TR3/4
	1250	3.0	1260	60	1/2"	R63 PT 1250 TR1/2
	1250	3.0	1260	60	5/8"	R63 PT 1250 TR5/8
	1250	3.0	1260	60	3/4"	R63 PT 1250 TR3/4

continued on next page...

NOTE: All dimensions are in mm and all loadings in kg unless otherwise stated

continued from previous page...

roller diameter A	roller width B	wall guage	inside frame width	load capacity	spindle diameter C	reference
76	300	3.0	310	320	5/8"	R76 PT 300 TR5/8
	300	3.0	310	320	20mm	R76 PT 300 TR20
	350	3.0	360	320	5/8"	R76 PT 350 TR5/8
	350	3.0	360	320	20mm	R76 PT 350 TR20
	400	3.0	410	320	5/8"	R76 PT 400 TR5/8
	400	3.0	410	320	20mm	R76 PT 400 TR20
	450	3.0	460	320	5/8"	R76 PT 450 TR5/8
	450	3.0	460	320	20mm	R76 PT 450 TR20
	500	3.0	510	320	5/8"	R76 PT 500 TR5/8
	500	3.0	510	320	20mm	R76 PT 500 TR20
	550	3.0	560	320	5/8"	R76 PT 550 TR5/8
	550	3.0	560	320	20mm	R76 PT 550 TR20
	600	3.0	610	320	5/8"	R76 PT 600 TR5/8
	600	3.0	610	320	20mm	R76 PT 600 TR20
	650	3.0	660	320	5/8"	R76 PT 650 TR5/8
	650	3.0	660	320	20mm	R76 PT 650 TR20
	700	3.0	710	320	5/8"	R76 PT 700 TR5/8
	700	3.0	710	320	20mm	R76 PT 700 TR20
	750	3.0	760	320	5/8"	R76 PT 750 TR5/8
	750	3.0	760	320	20mm	R76 PT 750 TR20
	800	3.0	810	320	5/8"	R76 PT 800 TR5/8
	800	3.0	810	320	20mm	R76 PT 800 TR20
	850	3.0	860	320	5/8"	R76 PT 850 TR5/8
	850	3.0	860	320	20mm	R76 PT 850 TR20
	900	3.0	910	320	5/8"	R76 PT 900 TR5/8
	900	3.0	910	320	20mm	R76 PT 900 TR20
	950	3.0	960	320	5/8"	R76 PT 950 TR5/8
	950	3.0	960	320	20mm	R76 PT 950 TR20
1000	3.0	1010	320	5/8"	R76 PT 1000 TR5/8	
1000	3.0	1010	320	20mm	R76 PT 1000 TR20	
1250	3.0	1260	320	5/8"	R76 PT 1250 TR5/8	
1250	3.0	1260	320	20mm	R76 PT 1250 TR20	

NOTE: All dimensions are in mm and all loadings in kg unless otherwise stated

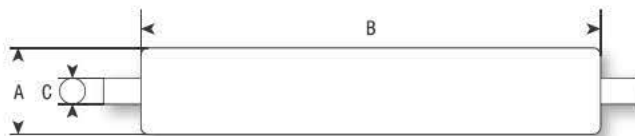
STAINLESS STEEL ROLLERS

R SS SR

MEDIUM DUTY

- Roller material: Stainless steel
- Spindle material: Stainless steel
- Spindle type: Round, spring loaded

VARLEY



roller diameter A	roller width B	wall guage	inside frame width	load capacity	spindle diameter C	reference
25	100	1.2	105	10	8	R25 SS 100 SR08
	150	1.2	155	10	8	R25 SS 150 SR08
	200	1.2	205	10	8	R25 SS 200 SR08
	250	1.2	255	10	8	R25 SS 250 SR08
	300	1.2	305	10	8	R25 SS 300 SR08
	350	1.2	355	10	8	R25 SS 350 SR08
	400	1.2	405	10	8	R25 SS 400 SR08
50	300	1.5	310	60	10	R50 PL 300 SR10
	350	1.5	360	60	10	R50 PL 350 SR10
	400	1.5	410	60	10	R50 PL 400 SR10
	450	1.5	460	60	10	R50 PL 450 SR10
	500	1.5	510	60	10	R50 PL 500 SR10
	550	1.5	560	60	10	R50 PL 550 SR10
	600	1.5	610	60	10	R50 PL 600 SR10

STAINLESS STEEL ROLLERS

R SS SH

MEDIUM DUTY

- Roller material: Stainless steel
- Spindle material: Stainless steel
- Spindle type: Hexagonal, spring loaded

VARLEY



roller diameter A	roller width B	wall guage	inside frame width	load capacity	spindle A/F C	reference
50	300	1.5	310	60	11	R50 SS 300 SH11
	350	1.5	360	60	11	R50 SS 350 SH11
	400	1.5	410	60	11	R50 SS 400 SH11
	450	1.5	460	60	11	R50 SS 450 SH11
	500	1.5	510	60	11	R50 SS 500 SH11
	550	1.5	560	60	11	R50 SS 550 SH11
	600	1.5	610	60	11	R50 SS 600 SH11
	650	1.5	660	60	11	R50 SS 650 SH11
	700	1.5	710	60	11	R50 SS 700 SH11
	750	1.5	760	60	11	R50 SS 750 SH11
	800	1.5	810	60	11	R50 SS 800 SH11

NOTE: All dimensions are in mm and all loadings in kg unless otherwise stated



GR – GROOVED MILD STEEL SLAVE ROLLERS

Any 50mm steel roller on the following pages can be supplied with single or twin grooves to accomodate drive or slave bands

To order, add the reference below to the roller reference

number of grooves	reference
1	GR1
2	GR2



RD – SLAVE ROLLER DRIVE BANDS

Polyurethane bands for use on line shaft drive conveyor systems

type	reference (pack of 10)
medium: roller to roller	RDRM
large: roller to drive shaft	RDRL



TRS – LINE SHAFT TRANSFER SPOOL

Facilitates power transfer from 25mm drive shaft via drive bands

to suit drive shaft diameter	reference (pack of 10)
25	TRS1



SUS – LINE SPEED UP SPOOL

Increases roller speed from from 25mm drive shaft via drive bands

Speed up spools can also be used to create a gap between adjacent products

Supplied in two piece kit which snaps over line shaft transfer spool

to suit drive shaft diameter	reference
25	SUS1

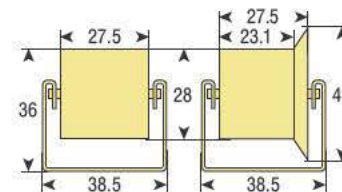
NOTE: All dimensions are in mm and all loadings in kg unless otherwise stated

ROLLER CHANNEL

LC LIGHT DUTY

- Plain tread or single flanged rollers
- Bright galvanised channel with all rounded edges
- Steel axles for smooth, silent running

VARLEY



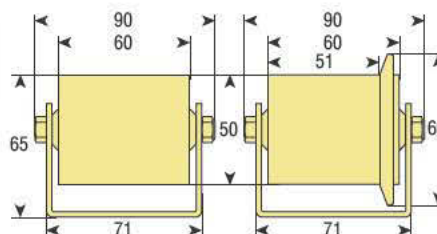
channel length	roller pitch	load capacity per roller	plain rollers (pack of 10 channels)	flanged rollers (pack of 10 channels)
2955	33	3	LCNP 3000 P033	LCNF 3000 P050
	50	3	LCNP 3000 P050	

ROLLER CHANNEL

HC HEAVY DUTY

- Plain tread or single flanged rollers
- Rollers manufactured in high impact polyamide
- 2mm bright galvanised channel
- Bolted steel axles for smooth, silent running

VARLEY

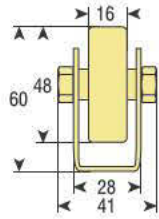


channel length	roller pitch	load capacity per roller	plain rollers (pack of 10 channels)	flanged rollers (pack of 10 channels)
2990	52	40	HCNP 2990 P052	HCNF 2990 P078
	78	40	HCNP 2990 P078	

NOTE: All dimensions are in mm and all loadings in kg unless otherwise stated



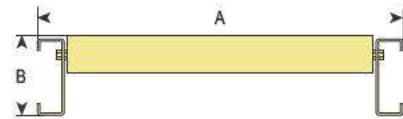
- Plastic or steel skate wheels
- Wheels fitted with single row ball bearing
- 2mm bright galvanised channel
- Steel axes for smooth, silent running



channel length	wheel pitch	load capacity per wheel	plastic skate wheels (pack of 10 channels)	steel skate wheels (pack of 10 channels)
3000	50	10	SCNP 3000 P050	SCSP 3000 P050
	50	20		
	100	10	SCNP 3000 P100	SCSP 3000 P100
	100	20		

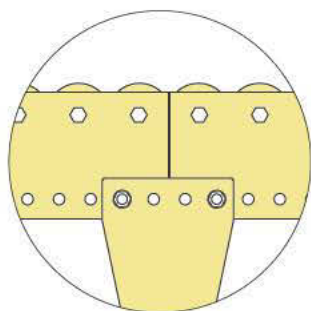
NOTE: All dimensions are in mm and all loadings in kg unless otherwise stated

- High quality general purpose conveyor
- Fitted with 50mm diameter medium duty steel rollers
- Track stands sold separately

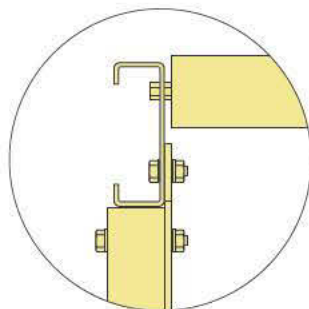


track length*	roller width	roller pitch	track width A	overall height B	load capacity per roller	flanged rollers (pack of 10 channels)
1500	400	78	485	105	100	CTS 50X400 S15 P078
	400	104	485	105	100	CTS 50X400 S15 P104
	400	156	485	105	100	CTS 50X400 S15 P156
	600	78	685	105	100	CTS 50X600 S15 P078
	600	104	685	105	100	CTS 50X600 S15 P104
	600	156	685	105	100	CTS 50X600 S15 P156
2000	400	78	485	105	100	CTS 50X400 S20 P078
	400	104	485	105	100	CTS 50X400 S20 P104
	400	156	485	105	100	CTS 50X400 S20 P156
	600	78	685	105	100	CTS 50X600 S20 P078
	600	104	685	105	100	CTS 50X600 S20 P104
	600	156	685	105	100	CTS 50X600 S20 P156
3000	400	78	485	105	100	CTS 50X400 S30 P078
	400	104	485	105	100	CTS 50X400 S30 P104
	400	156	485	105	100	CTS 50X400 S30 P156
	600	78	685	105	100	CTS 50X600 S30 P078
	600	104	685	105	100	CTS 50X600 S30 P104
	600	156	685	105	100	CTS 50X600 S30 P156

* Nominal track length. Will vary slightly depending on roller pitch.



Use TS series stands at join of tracks to create a longer system.

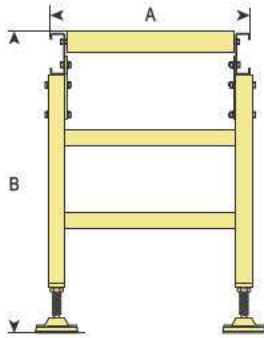


Unique profile and construction of conveyor track ensures simple removal of spring loaded rollers as well as replacement when necessary.

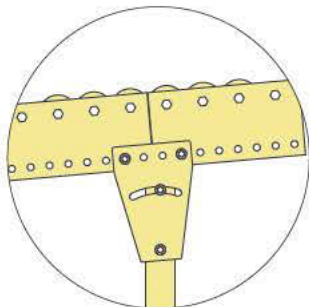
NOTE: All dimensions are in mm and all loadings in kg unless otherwise stated



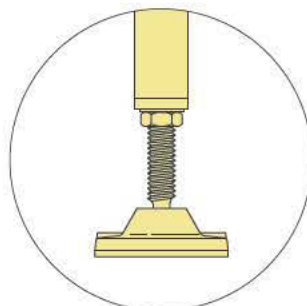
- For use with CTS track
- Supplied with all necessary fixings
- Fitted as standard with height adjustable levelling feet



to suit track width A	minimum height to top of roller B	maximum height to top of roller B	reference
485	525	575	TS 485X550
	625	675	TS 485X650
	725	775	TS 485X750
	825	875	TS 485X850
685	525	575	TS 685X550
	625	675	TS 685X650
	725	775	TS 685X750
	825	875	TS 685X850



Gradient can be created simply by loosening bolts and pivoting track stand fixing plate.



Track stands fitted with high quality adjustable levelling feet.

NOTE: All dimensions are in mm and all loadings in kg unless otherwise stated

Complete conveyor systems...



Clockwise from top left:
 Modular belt conveyor;
 Flighted modular belt conveyor;
 Line shaft powered roller conveyor;
 Agitating chain to chain powered roller conveyor;
 Chain to chain powered roller conveyor;
 24 volt powered roller conveyor

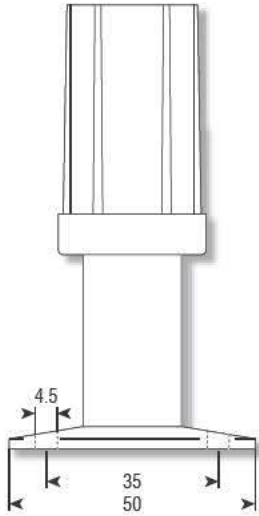




○ Height adjustable feet

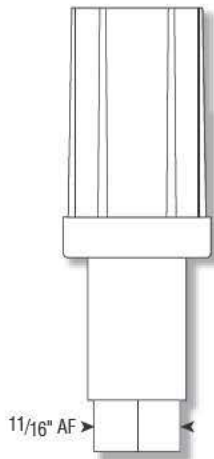
ADJUSTABLE FEET BA

BAFL - FLANGED FEET



to suit tube	load rating	adjustment range	reference
30mm square x 1.2 - 1.5 guage	300	35	BAFL 0300 0740

BAHE - HEXAGON FEET

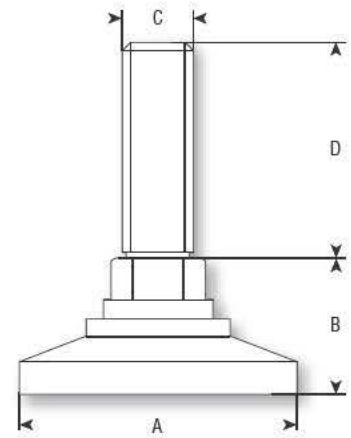


to suit tube	load rating	adjustment range	reference
30mm square x 1.2 - 1.5 guage	300	35	BAHE 0300 0740

NOTE: All dimensions are in mm and all loadings in kg unless otherwise stated

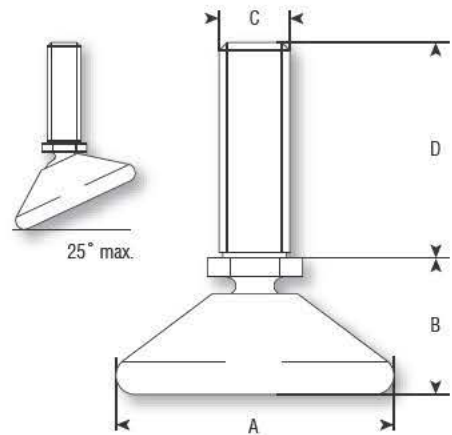


AF - RIGID DESIGN



A	B	C	D	load capacity	reference	for use with threaded socket
30	19	M10	45	1000	AFR 30 M10X45	AFS25X15M10, AFS30X15M10, AFS30X20M10 AFS114X18M10, AFS114X16M10
40	19	M10	45	1000	AFR 40 M10X45	AFS25X15M10, AFS30X15M10, AFS30X20M10 AFS114X18M10, AFS114X16M10
50	19	M10	45	1000	AFR 50 M10X45	AFS25X15M10, AFS30X15M10, AFS30X20M10 AFS114X18M10, AFS114X16M10

AF - TILTING DESIGN



A	B	C	D	load capacity	reference	for use with threaded socket
32	20	M8	25	75	AFT 32 M8X25	AFS1X18M8, AFS1X16M8, AFS118X18M8
40	20	M10	37	100	AFT 40 M10X37	AFS25X15M10, AFS30X15M10, AFS30X20M10 AFS114X18M10, AFS114X16M10
55	20	M10	50	250	AFT 55 M10X50	AFS25X15M10, AFS30X15M10, AFS30X20M10 AFS114X18M10, AFS114X16M10

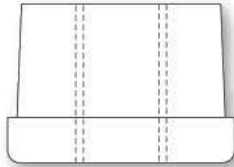
NOTE: All dimensions are in mm and all loadings in kg unless otherwise stated



VARLEY

○ Threaded tube end fittings for use with AF series adjustable levelling feet

ADJUSTABLE FEET AF SOCKETS



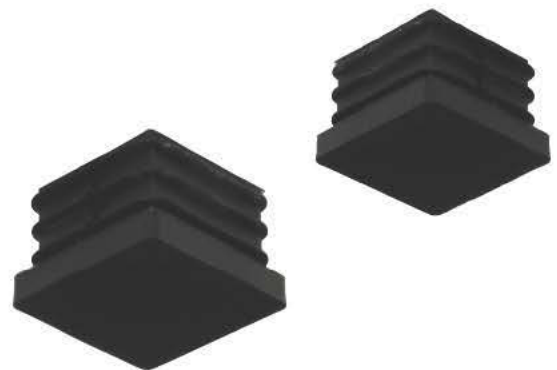
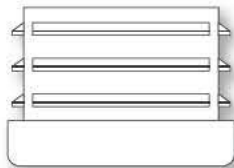
to suit tube	thread size	load capacity	reference	for use with foot
1" x 1" x 18g	M8	150	AFS 1X18 M8	AFT32M8X25
1" x 1" x 16g	M8	200	AFS 1X16 M8	AFT32M8X25
1 1/8" x 1 1/8" x 18g	M8	150	AFS 118X18 M8	AFT32M8X25
25 x 25 x 1 5mm	M10	200	AFS 25X15 M10	AFT40M10X37, AFT55M10X50, AFR30M10X45, AFR40M10X45, AFR50M10X45
30 x 30 x 1 5mm	M10	200	AFS 30X15 M10	AFT40M10X37, AFT55M10X50, AFR30M10X45, AFR40M10X45, AFR50M10X45
30 x 30 x 2 0mm	M10	200	AFS 30X20 M10	AFT40M10X37, AFT55M10X50, AFR30M10X45, AFR40M10X45, AFR50M10X45
1 1/4" x 1 1/4" x 18g	M10	250	AFS 114X18M10	AFT40M10X37, AFT55M10X50, AFR30M10X45, AFR40M10X45, AFR50M10X45
1 1/4" x 1 1/4" x 16g	M10	250	AFS 114X16M10	AFT40M10X37, AFT55M10X50, AFR30M10X45, AFR40M10X45, AFR50M10X45



VARLEY

○ Spring loaded ball transfer units
○ Press fit

TUBE END FITTINGS EF



to suit tube	reference
3/4" x 3/4" x 18g/16g	EF 34
7/8" x 7/8" x 18g/16g	EF 78
1" x 1" x 18g/16g	EF 1
30 x 30 x 1 5/2.0mm	EF 30
1 1/4" x 1/4" x 18g/16g	EF 114

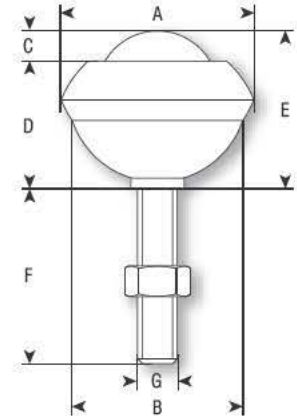
NOTE: All dimensions are in mm and all loadings in kg unless otherwise stated

BALL TRANSFER UNITS

V TYPE A

- Ball transfer units with threaded stem fixing
- Available with mild steel, nylon or stainless steel ball

VARLEY



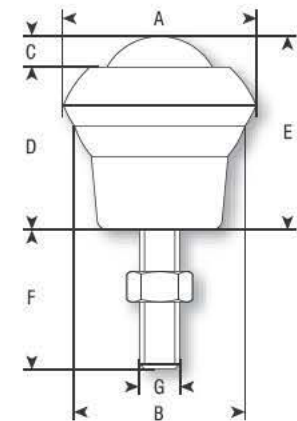
ball diameter	units with mild steel ball							units with nylon ball			completely stainless units					
	A	B	C	D	E	F	G	load ball up	load ball down	reference	load ball up	load ball down	reference			
19	32.1	25.4	4.7	19.9	24.6	35	M8	25	10	V19A	20	n/a	V19A NY	25	10	V19A SS
25	39.7	32.5	6.3	26.2	32.5	35	M8	55	25	V25A	25	n/a	V25A NY	55	25	V25A SS
40	55.5	47.6	11.9	35.7	47.6	40	M10	140	60	V40A				140	60	V40A SS

BALL TRANSFER UNITS

V TYPE B

- Ball transfer units with threaded stem and cup fixing
- Available with mild steel, nylon or stainless steel ball

VARLEY



ball diameter	units with mild steel ball							units with nylon ball			completely stainless units					
	A	B	C	D	E	F	G	load ball up	load ball down	reference	load ball up	load ball down	reference			
19	32.1	25.4	4.7	25.5	30.2	35	M8	25	10	V19B	20	n/a	V19B NY	25	10	V19B SS
25	39.7	25.4	6.3	33.4	39.7	33	M8	55	25	V25B	25	n/a	V25B NY	55	25	V25B SS
31	73.0	49.7	8.0	34.0	42.0	35	M10	125	55	V31B						
40	55.5	49.0	11.9	45.1	57.0	38	M10	140	60	V40B				140	60	V40B SS

NOTE: All dimensions are in mm and all loadings in kg unless otherwise stated

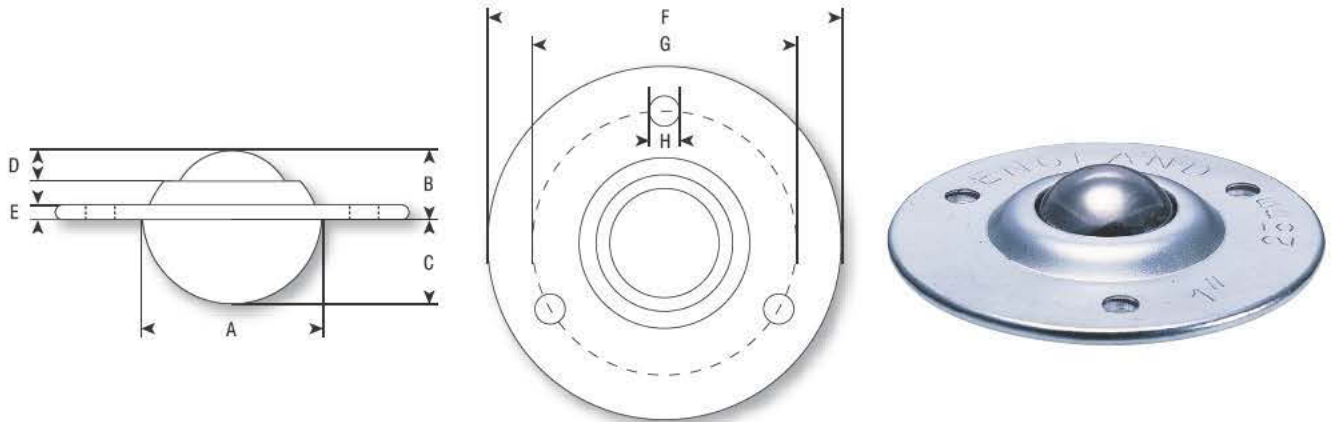


VARLEY

- Ball transfer units with circular flange fixing
- Available with mild steel, nylon or stainless steel ball

BALL TRANSFER UNITS

V
TYPE C



ball diameter	units with mild steel ball									units with nylon ball			completely stainless units				
	A	B	C	D	E	F	G	H	load ball up	load ball down	reference	load ball up	load ball down	reference	load ball up	load ball down	reference
19	29.5	10.00	12.0	3.2	3.2	61	44.5	5.5	25	10	V19C	20	n/a	V19C NY	25	10	V19C SS
25	38.1	14.20	15.8	6.3	3.0	73	55.6	5.0	55	25	V25C	25	n/a	V25C NY	55	25	V25C SS
31	46.0	16.25	19.9	8.0	4.25	73	58.7	5.0	125	55	V31C				125	55	V31C SS
40	56.0	21.45	24.6	8.75	6.0	89	70.0	7.0	140	60	V40C				140	60	V40C SS
50	76.0	28.27	30.2	14.3	6.3	121	92.0	8.0	340	100	V50C				340	100	V50C SS

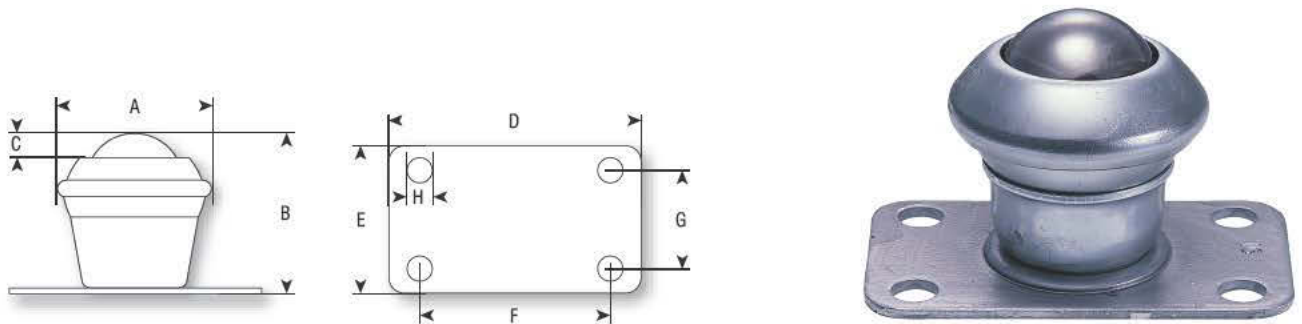


VARLEY

- Ball transfer units with plate fixing
- Available with mild steel, nylon or stainless steel ball

BALL TRANSFER UNITS

V
TYPE D



ball diameter	units with mild steel ball									units with nylon ball			completely stainless units				
	A	B	C	D	E	F	G	H	load ball up	load ball down	reference	load ball up	load ball down	reference	load ball up	load ball down	reference
19	32.1	32.5	4.7	65.1	38.0	49.2	25.4	6.3	25	10	V19D	20	n/a	V19D NY			
25	39.7	41.3	6.3	65.1	38.0	49.2	25.4	6.3	55	25	V25D	25	n/a	V25D NY			
31	73.0	44.4	8.0	58.7	58.7	47.6	47.6	4.8	125	55	V31D				125	55	V31D SS
40	55.5	57.0	11.9	58.7	58.7	47.6	47.6	4.8	140	60	V40D				140	60	V40D SS

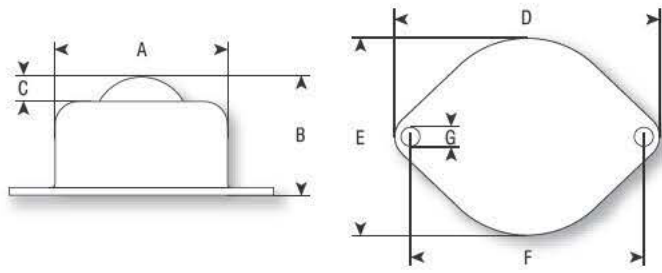
NOTE: All dimensions are in mm and all loadings in kg unless otherwise stated

BALL TRANSFER UNITS

V TYPE E

- Ball transfer units with threaded stem fixing
- Available with mild steel, nylon or stainless steel ball

VARLEY



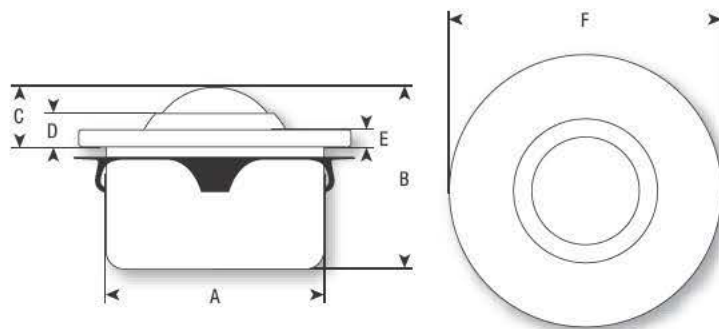
ball diameter								units with mild steel ball			units with nylon ball			completely stainless units		
	A	B	C	D	E	F	G	load ball up	load ball down	reference	load ball up	load ball down	reference	load ball up	load ball down	reference
25	44.5	30.5	6.3	68.3	50.8	60.32	5	55	25	V25E	25	n/a	V25E NY	55	25	V25E SS

BALL TRANSFER UNITS

V TYPE F

- Ball transfer units with circular flange and spring clip fixing
- Available with mild steel, nylon or stainless steel ball

VARLEY



ball diameter							units with mild steel ball			units with nylon ball			completely stainless units		
	A	B	C	D	E	F	load ball up	load ball down	reference	load ball up	load ball down	reference	load ball up	load ball down	reference
15	24	21.0	9.5	6.3	2.8	31	25	10	V15F	20	n/a	V15F NY	25	10	V15F SS
22	36	30.0	9.8	5.5	2.8	45	55	25	V22F	25	n/a	V22F NY	55	25	V22F SS
30	45	37.0	13.8	8.3	4.0	55	125	55	V30F			V30FNY			V30F SS
45	62	53.5	19.0	10.0	4.0	75	140	60	V45F				140	60	V45F SS

NOTE: All dimensions are in mm and all loadings in kg unless otherwise stated



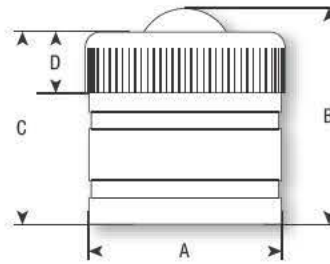
VARLEY

- Spring loaded ball transfer units
- Press fit

BALL TRANSFER UNITS

V
TYPE G

ball diameter	units with mild steel ball				load		reference
	A	B	C	D	ball up	ball down	
12	25.4	28.5	25.4	8	22	n/a	V12G



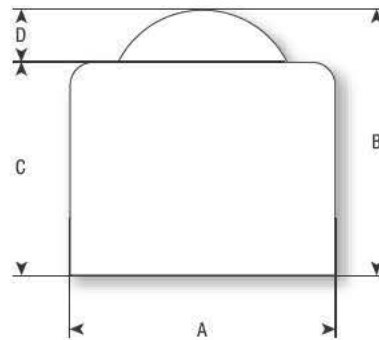
VARLEY

- Press fit ball transfer units

BALL TRANSFER UNITS

V
TYPE H

ball diameter	units with mild steel ball				load		reference
	A	B	C	D	ball up	ball down	
12	20	20	18	2	25	n/a	V12H
19	30	30	26	4	50	n/a	V19H
25	35	35	28	7	125	n/a	V25H



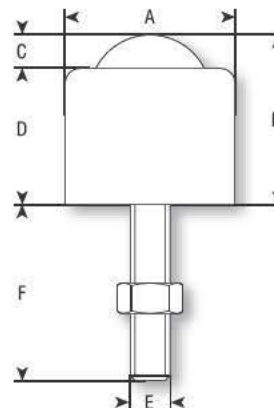
VARLEY

- Ball transfer units with threaded stem fixing

BALL TRANSFER UNITS

V
TYPE J

ball diameter	units with mild steel ball						load		reference
	A	B	C	D	E	F	ball up	ball down	
12	20	20	2	18	M6	28	25	n/a	V12J
19	30	30	4	26	M8	25	50	n/a	V19J
25	35	35	7	28	M8	40	125	n/a	V25J



NOTE: All dimensions are in mm and all loadings in kg unless otherwise stated

AXLE SETS AX

- Comprising mild steel axle, two axle brackets, two collars, two washers and two split pins
- Axle brackets and collars are movable along length of axle
- Each axle bracket has 2 fixing holes on 3/4" centres

VARLEY



axle diameter	axle length	reference
1"	18"	3AXKIT18
	24"	3AXKIT24
	30"	3AXKIT30
	36"	3AXKIT36

FIXING WASHERS STARLOCKS

- Imperial or metric sizes
- Plain or chrome capped

VARLEY



IMPERIAL SIZES

to suit axle diameter	uncapped	chrome capped
1/4"	5873	6225
5/16"	5821	6226
3/8"	6020	6227
1/2"	6143	6229
3/4"	6322	6234
1"	6329	6334

METRIC SIZES

to suit axle diameter	uncapped	chrome capped
8	6704	6671
10	6496	6668
12	6713	6675
15	6714	6676
20	6716	6678
25	6717	6679

NOTE: All dimensions are in mm and all loadings in kg unless otherwise stated

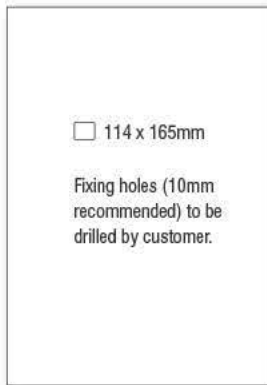


TRUCK LOCKS TLCM

- Provide a ready means of steadying a truck without raising it
- Complete freedom of movement restored by quick release foot pedal
- Moderate operating force required to press rubber pad into contact with the ground does not alter with load

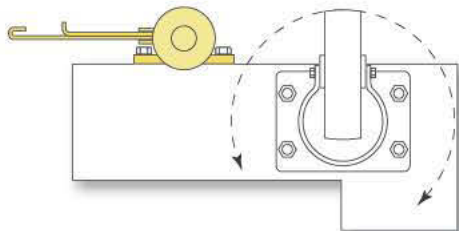


IMPORTANT: Top fixing holes should be no more than 353mm, and bottom fixing holes no less than 226mm above floor surface. Pad should be 33mm above floor surface when raised



overall height free position	overall height pad extended	pedal	
		left hand	right hand
346	381	TLCM L	TLCM R

Mount truck locks as near as possible to swivel castors, without encroaching on swivel radius. Select left or right hand lever to protect against accidental damage



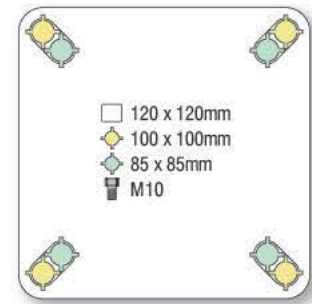
Trucks with 4 swivel castors:
Mount 1 truck lock each end
Trucks with 2 swivel, 2 fixed castors:
Mount 1 truck lock beside each swivel castor as a minimum requirement

NOTE: All dimensions are in mm and all loadings in kg unless otherwise stated

TRUCK LOCKS

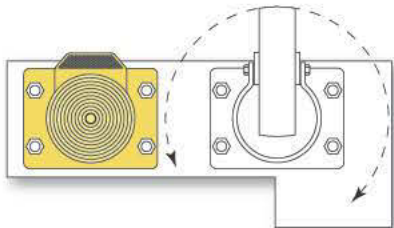
4040

- Provide a ready means of steadying a truck without raising it
- Complete freedom of movement restored by quick release foot pedal
- Moderate operating force required to press rubber pad into contact with the ground does not alter with load



overall height free position	overall height pad extended	reference
125	150	4040 0206
170	210	4040 0207

Mount truck locks as near as possible to swivel castors, without encroaching on swivel radius



Trucks with 4 swivel castors:

Mount 1 truck lock each end

Trucks with 2 swivel, 2 fixed castors:

Mount 1 truck lock beside each swivel castor as a minimum requirement

NOTE: All dimensions are in mm and all loadings in kg unless otherwise stated

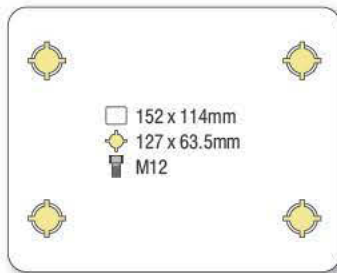


- Provide a ready means of steadying a truck without raising it
- Complete freedom of movement restored by quick release foot pedal
- Moderate operating force required to press rubber pad into contact with the ground does not alter with load

TRUCK LOCKS TLCH

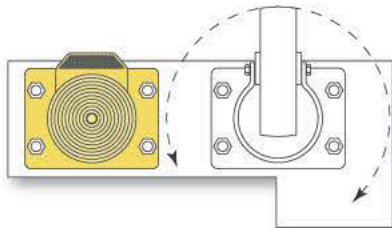


IMPORTANT: TLCH truck locks should be mounted with the top face of the fixing plate exactly 200mm above the floor surface



overall height free position	overall height pad extended	reference
163.5	208	TLCH

Mount truck locks as near as possible to swivel castors, without encroaching on swivel radius



Trucks with 4 swivel castors:

Mount 1 truck lock each end

Trucks with 2 swivel, 2 fixed castors:

Mount 1 truck lock beside each swivel castor as a minimum requirement

NOTE: All dimensions are in mm and all loadings in kg unless otherwise stated

TURNTABLES KDL

○ Heavy duty turntables for mechanical handling applications and special trailers

VARLEY



General information

Slewing rings are supplied undrilled and primed for corrosion protection.

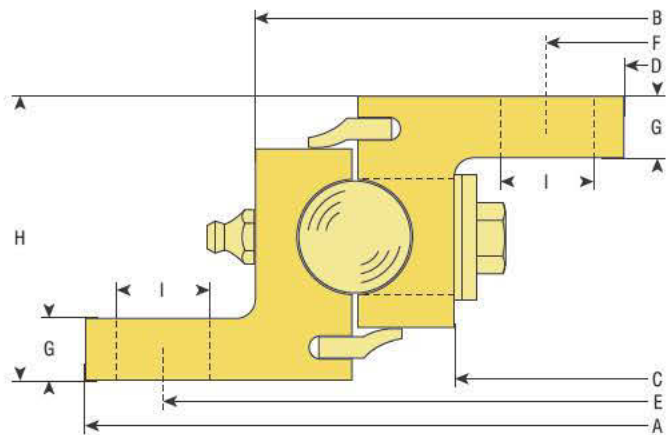
Material: C45.

Ball race: Hardened.

4 conical lubrication nipples AM 8 x 1 according to DIN 71412.

The axial loads above are applicable if the slewing ring is mounted to the front axle of a trailer at speeds of up to 105km/h (65mph).

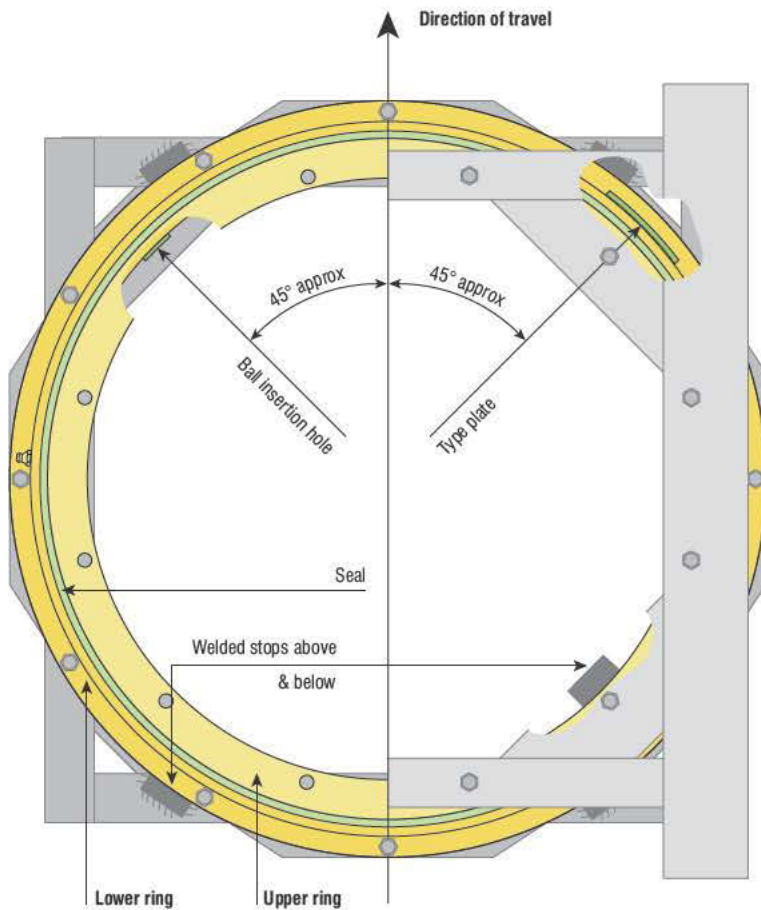
If the slewing ring is to be used in self steering systems or above a fifth wheel please contact us for the maximum permissible loads by submitting construction data.



A	B	C	D	E*	F*	G	H	I*	approximate weight	load cap. (tonnes)	reference
520	451	371	302	490	332	12	56	18	25	4	KDL900-1
650	581	501	432	620	462	12	56	18	32	8	KDL900-2
750	681	601	532	720	562	12	56	18	38	12	KDL900-3
850	781	701	632	820	662	12	56	18	44	15	KDL900-4
950	881	801	732	920	762	12	56	18	50	18	KDL900-5
1050	981	901	832	1020	862	12	56	18	56	21	KDL900-6
1200	1131	1051	982	1170	1012	12	56	18	65	25	KDL900-7

* Recommended drilling measurements

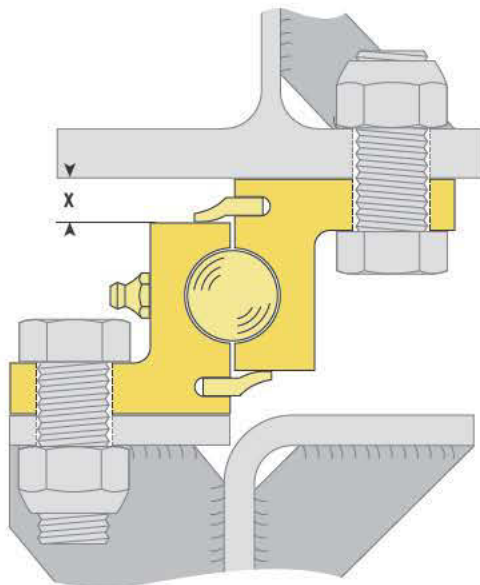
NOTE: All dimensions are in mm and all loadings in kg unless otherwise stated



Fitting and maintenance instructions

1. The slewing ring must be mounted on a completely flat and rigid base with at least 50% of the circumference adequately supported. Particular attention must be paid to the support of the web section area containing the slewing ring races. Any unevenness under the flanges can be corrected with metal strips or by filling in with plastic metal.
2. Each flange must be attached with at least 12 high tensile bolts M16 x 1.5 of grade 8.8.

Do not drill in the area of the ball insertion hole, which should be at less than 45° to the direction of travel.
3. To ease the shear load on the mounting bolts in the case of horizontal force at least 4 blocks should be welded on immediately adjoining each flange. The slewing ring must not be mounted by means of welding.
4. The slewing rings are lubricated before they leave the factory. Before they are put into operation for the first time however, they must be adequately re-lubricated with ball bearing grease depending on the location. Whilst lubricating, the A-frame should be turned so that the grease is evenly distributed and a collar of fresh grease extrudes around the entire circumference of the washers.
5. The slewing ring must be lubricated according to use but at least once a month with a suitable ball bearing grease depending on the location. Whilst lubricating, the A-frame should be turned so that the grease is evenly distributed and a collar of fresh grease extrudes around the entire circumference of the washers. The tightness of the mounting bolts should also be checked.
6. Slewing rings are subject to wear. The limit of wear is reached when the axial play is 3.5mm. This is at the latest the case when the distance X is less than or equal to 7mm at any point on the circumference.



NOTE: All dimensions are in mm and all loadings in kg unless otherwise stated

TURNTABLES HE SO

- Turntables for drawbar trailers and special trailers
- HE and SO turntables are not suitable for mechanical handling applications

VARLEY



General information

For turntables which will be used in a mechanical handling application see the KDL series on page 30.

Slewing rings are supplied primed for corrosion protection.

Measurements are subject to the manufacturer's standard tolerances.

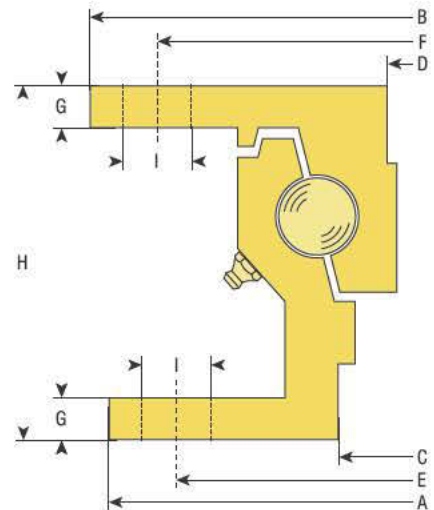
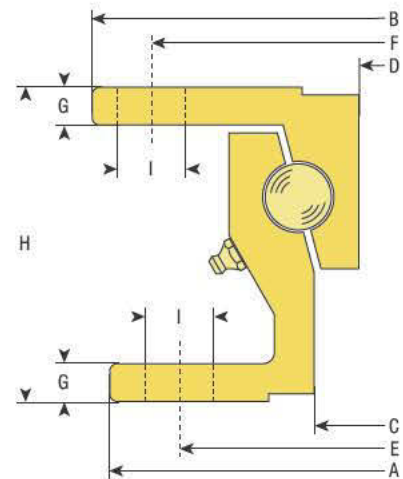
The above axial loads are applicable if the turntable is mounted to the front axle of a trailer with three axles at speeds of up to 105km/h (65 mph).

Axial loads may be exceeded by 10% for full trailers with two axles.

In the case of speeds below 30km/h (18 mph) the axial loads may be exceeded by 20%.

In the case of use above the steered axle and above the fifth wheel on semi-trailers with rear axle steering, please enquire for load data giving details of the vehicle.

Load capacities given are only valid for operation on paved roads and under conditions prevailing in Europe.



HE TURNTABLES

A	B	C	D	E	F	G	H	I	approximate weight	load cap. (tonnes)	reference
685	700	588	567	657 *	671 *	9	80	undrilled	32	3	HE4
880	895	783	762	852	866	9	80	16	43	5	HE5
1000	1015	903	882	972 *	986 *	9	80	undrilled	48	6	HE6/1000
1090	1105	993	972	1060	1074	9	80	18	52	6.5	HE6
1000	1008	886	859	960 *	974 *	10	90	undrilled	63	7	HE12/1000
1100	1108	986	959	1060	1074	10	90	18	69	8	HE12
1000	1008	886	859	960 *	974 *	10	90	undrilled	63	8	HE18/1000
1100	1108	986	959	1060	1074	10	90	18	69	10	HE18
1000	1008	886	859	960 *	974 *	10	90	undrilled	63	10	HE1000/22
1100	1108	986	959	1060	1074	10	90	18	69	12	HE1100/22
1200	1208	1086	1059	1160	1174	10	90	18	76	13	HE1200/22

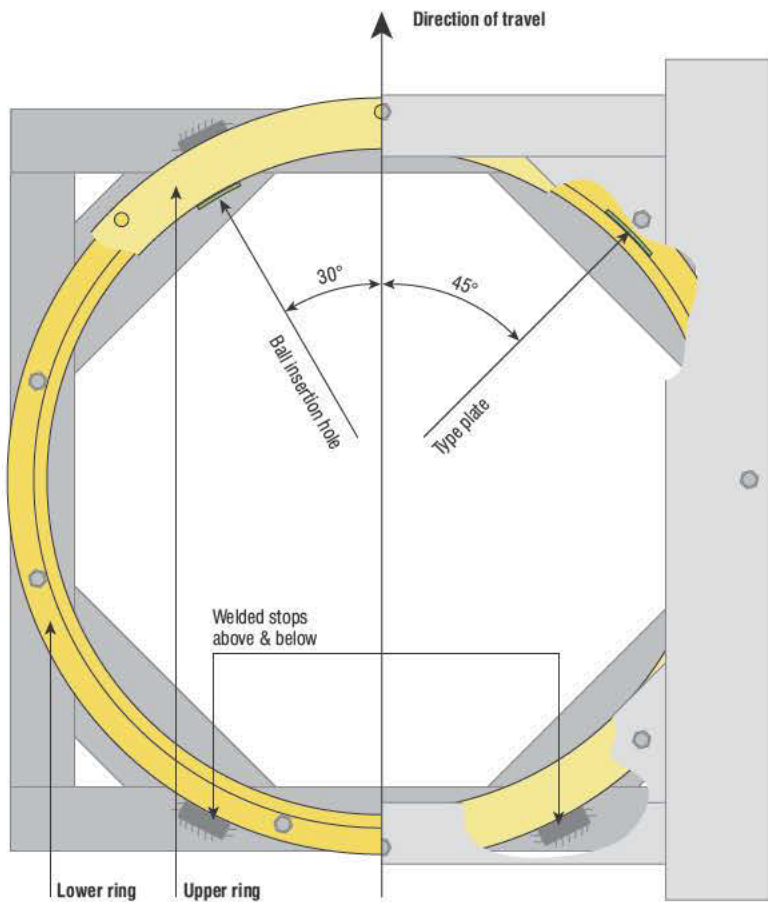
* Recommended drilling measurements for undrilled turntables

SO TURNTABLES

A	B	C	D	E	F	G	H	I	approximate weight	load cap. (tonnes)	reference
987	1000	871	844	952 *	332 *	10	90	undrilled	72	12	SO1000/24
1095	1108	979	952	1060	462	10	90	18	82	16	SO1100/24

* Recommended drilling measurements for undrilled turntables

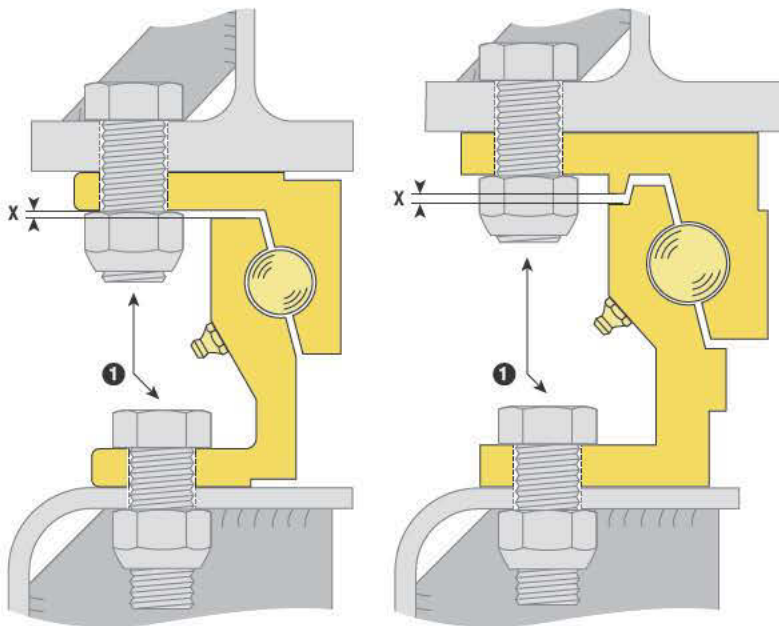
NOTE: All dimensions are in mm and all loadings in kg unless otherwise stated



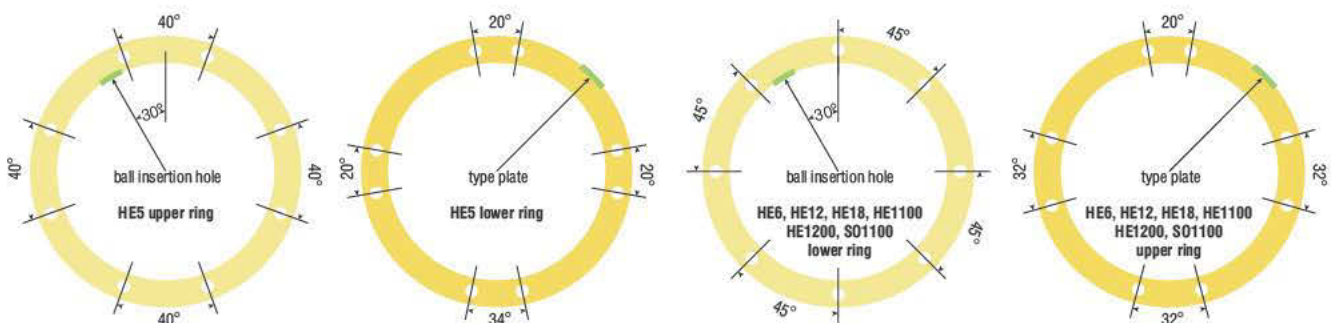
Fitting and maintenance instructions

1. The ball bearing turntable must be mounted on a completely flat and rigid base with at least 50% of the circumference adequately supported. Particular attention must be paid to the support of the web section area containing the ball bearing races. Any unevenness under the flanges can be corrected with metal strips or by filling in with plastic metal.
2. Each flange must be attached with a minimum of 8 high tensile bolts grade 8.8, preferably M14 x 1.5 or M16 x 1.5.

Do not drill in the area of the type plate (ball insertion hole) which should be located at less than 40° to the direction of travel.
3. To ease the shear load on the mounting bolts at least 4 blocks should be welded on immediately adjoining each flange. The ball bearing turntable must not be mounted by means of welding.
4. The turntables are lubricated with a lubricant suitable for the type of operation and the the adherent operating conditions before they leave the factory, however the turntable must be adequately re-lubricated before the trailer is put into operation for the first time. The re-lubrication should build up a collar of grease in the gap between the 2 rings of the turntable thus preventing ingress of grit and water into the ball races.
5. The ball bearing turntable must be lubricated according to use but at least once a month with a lubricant suitable for the type of operation and the adherent operating condition. While lubricating the A-frame should be turned so that the grease is evenly distributed and a collar of grease is being built up in the gap between the two rings. The tightness of the mounting bolts should also be checked.
6. Ball bearing turntables are subject to wear. The limit of wear is reached when the axial play is 3.5mm. This is at the latest the case when the air gap X = 0mm at any point on the circumference of the turntable.



1 Alternative mounting with head of bolt underneath counter nut also admissible



TURNTABLES

L N

- L series turntables are suitable for farm carts and trailers with a speed up to 25kmh (15mph)
- N series turntables are suitable for heavy farm carts and light truck trailers with a speed above 25kmh (15mph)
- L and N series turntables are not suitable for mechanical handling applications

VARLEY



General information

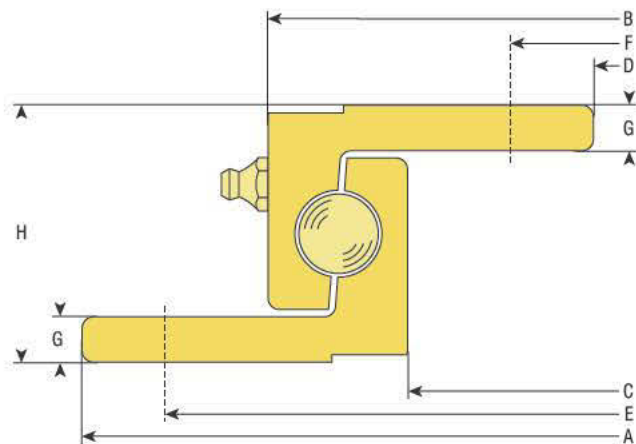
For turntables which will be used in a mechanical handling application see the KDL series on page 30.

Turntables are supplied undrilled and primed for corrosion protection.

Measurements are subject to the manufacturer's standard tolerances.

In the case of speeds below 30km/h (18 mph) the axial loads may be exceeded by 30% to 50%.

Load capacities given are only valid for operation on paved roads and under conditions prevailing in Europe.



L TURNTABLES

A	B	C	D	E*	F*	G	H	approximate weight	load cap. (tonnes)	reference
400	342	292	230	375	260	8	45	11	0.75	400L
500	442	392	330	475	360	8	45	15	0.90	500L
650	592	542	480	625	510	8	45	20	1.50	650L
750	692	642	580	725	610	8	45	23	1.80	750L
850	792	742	680	825	710	8	45	27	2.50	850L
950	892	842	780	925	810	8	45	30	3.00	950L
1050	992	942	880	1025	910	8	45	34	3.50	1050L

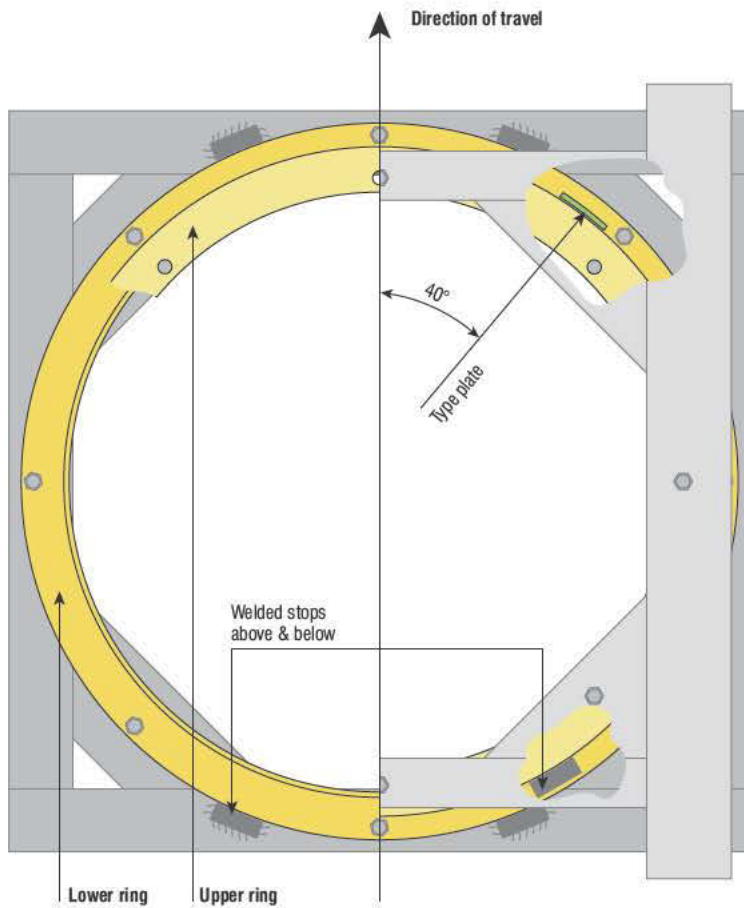
* Recommended drilling measurements

N TURNTABLES

A	B	C	D	E*	F*	G	H	approximate weight	load cap. (tonnes)	reference
500	437	384	315	475	340	8	52	17	1.80	500N
650	587	534	465	625	490	8	52	23	2.50	650N
750	687	634	565	725	590	8	52	28	3.00	750N
850	787	734	665	825	690	8	52	32	3.50	850N
950	887	834	765	925	790	8	52	36	4.00	950N
1050	987	934	865	1025	890	8	52	40	4.5	1050N

* Recommended drilling measurements

NOTE: All dimensions are in mm and all loadings in kg unless otherwise stated

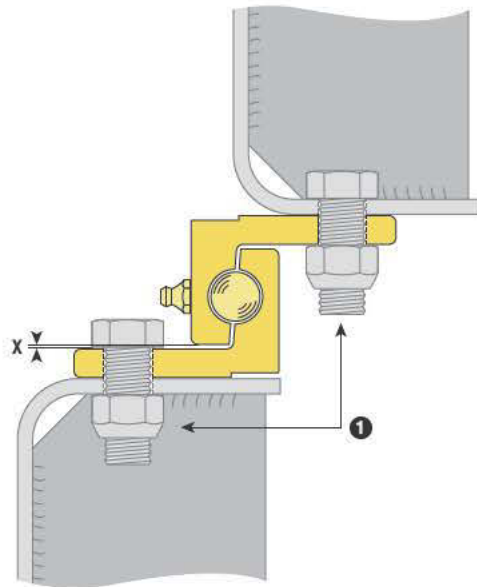


Fitting and maintenance instructions

1. The ball bearing turntable must be mounted on a completely flat and rigid base with at least 50% of the circumference adequately supported. Particular attention must be paid to the support of the web section area containing the ball bearing races. Any unevenness under the flanges can be corrected with metal strips or by filling in with plastic metal.
2. Each flange must be attached with a minimum of 8 high tensile bolts grade 8.8, preferably M10 x 1.25 or M12 x 1.5 for sizes below 650mm dia. 4 to 6 bolts are adequate.

Do not drill in the area of the type plate (ball insertion hole) which should be located at less than 40° to the direction of travel.

3. To ease the shear load on the mounting bolts in the case of horizontal force at least 4 blocks should be welded on immediately adjoining each flange. The ball bearing turntable must not be mounted by means of welding.
4. The turntables are lubricated with a lubricant suitable for the type of operation and the adherent operating conditions before they leave the factory, however the turntable must be adequately re-lubricated before the trailer is put into operation for the first time. The re-lubrication should build up a collar of grease in the gap between the 2 rings of the turntable thus preventing ingress of grit and water into the ball races.
5. The ball bearing turntable must be lubricated according to use but at least once a month with a lubricant suitable for the type of operation and the adherent operating condition. While lubricating the A-frame should be turned so that the grease is evenly distributed and a collar of grease is being built up in the gap between the two rings. The tightness of the mounting bolts should also be checked.
6. Ball bearing turntables are subject to wear. The limit of wear is reached when the axial play is 2.5mm. This is at the latest the case when the air gap $X = 0\text{mm}$ at any point on the circumference of the turntable.



1 Alternative mounting with head of bolt underneath counter nut also admissible

NOTE: All dimensions are in mm and all loadings in kg unless otherwise stated

Head Office and Warehouse



Unit 5 Century Park
Pacific Road Broadheath
Altrincham Cheshire
WA14 5BJ

t 0161 928 9617 **f** 0161 928 7824 **e** nthsales@varley.co.uk

Scotland and the North East

t 01698 747005 **f** 01698 747676 **e** scotsales@varley.co.uk

The Midlands

t 0121 328 8396 **f** 0121 328 3476 **e** midsales@varley.co.uk

w www.varley.co.uk

H Varley Limited

Materials Handling Range

Catalogue MH02



Cert. No. Q10773